

Specializing in the manufacturing of
local fume extractors, fans, filters, dust collectors
and controls for all working environments

MOVEX[®]

movexinc.com

PR - The ideal extractor for industrial environments.



The Movex PR represents a considerable step in the development of local extractors for industrial environments.

With its aluminum supporting arm and hood designed for maximum suction, the PR is extremely user friendly with lightweight positional stability. This arm is at the absolute leading edge of production technology.

Integrated buttons for lighting as well as fan start-up and damper opening are also an innovation with our local extractor control systems providing maximum benefits for the user.



Facts: PR

Variants and lengths:

Blue 5-36 feet
White 5-36 feet
Stainless 5-36 feet
ATEX 5-22 feet

Diameters:

4, 5, 6, 8 inches
4, 5, 6, 8 inches
4, 5, 6, 8 inches
4, 5, 6, 8 inches

The Movex PR has many new and important advantages:

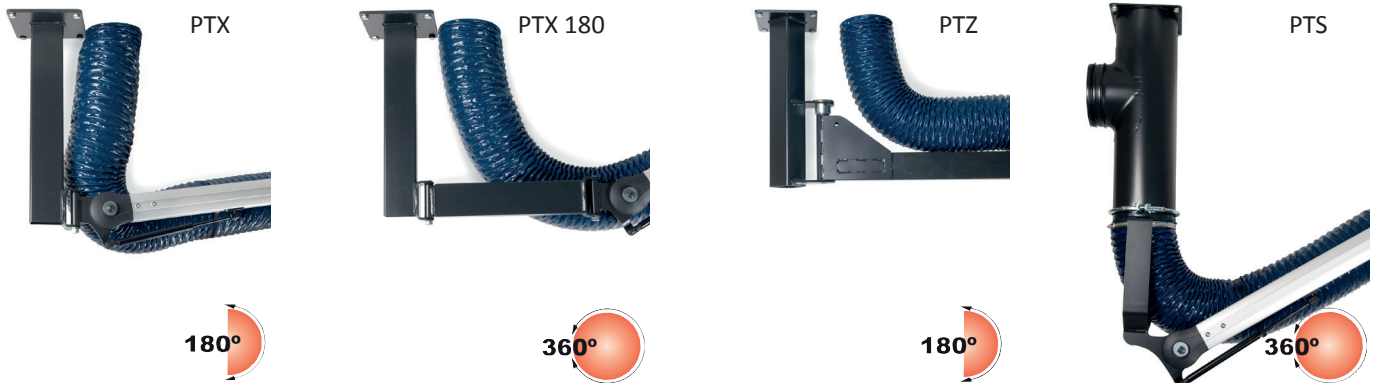
- Unique ease of maneuverability.
- Extreme positional stability.
- Designed for maximum suction and capture efficiency.

PR can be fitted with LED lighting and/or switch for operating fan/damper



Designed according to Movex's basic principles:

- Externally positioned supporting arms always provide the lowest pressure drop.
- Hose dimensions as required in 4, 5, 6 or 8 inches.
- Hose composition as required.
- Partially assembled for ease of installation.



PRG- PR arm with windscreen hood



Movex PRG is based upon the PR arm that with new technology in combination with new materials and a focus on design gives Movex PRG many new and important advantages:

- Unique ease of maneuverability.
- High positional stability.
- Hood in PVC designed for maximum capture efficiency and extraction.

Facts: **PRG**

Variants and lengths:
Blue 6-13 feet

Diameters:
6 inches

PRX - The robust alternative.

PRX equipped with gas springs to balance the weight of the arm.

The PRX therefore has a unique ease of maneuverability and high positional stability, also in outstretched positions.

The smooth inside of the suction duct of PRX extractors allows for a very easy cleaning. Adjustments of joints and the maintenance can be performed from outside easily and quickly with hand tools.

Wall mount with swivel 360 ° rotation is standard.

The Movex PRX-extractors is very easy to install. Accessories for ceiling, floor or table mounting are available.



Facts: **PRX**

Variants and lengths:
Blue 6-13 feet

Diameters:
5, 6, 8 inches

TEX - Telescopic local extractor for confined workplaces.

The Movex TEX telescoping local extractor with suction ducts in powder coated steel plate copes well with tougher environments such as dust from grinding, but is also naturally suitable for welding smoke.

As we always design our extractors with external supporting arms, the air has a less restricted flow route.

The smooth inside of the suction duct also makes this extractor easy to keep clean.

The TEX can be equipped with a flat screen hood for increased efficiency. Dome hoods and conical metal hoods are also available and the latter can be fitted with work lighting.



Facts: **TEX**

Variants and lengths:

Blue 7 feet
White 7 feet

Diameters:

5, 6 inches
5, 6 inches

R EXHP / RZ EXHP- Local extractor for explosive environments



Movex extractor R EXHP and RZ EXHP are built on a solid construction with external arm support for use in ATEX environments.

The standard for quality and safety for explosion protected equipment is called ATEX.

Movex local extractors are a safe choice within the pharmaceutical and food industries, as well as in workshop and laboratory environments.

All parts effectively earthed. Wall bracket and arm in stainless steel.

Facts: **R EXHP , RZ EXHP**

Variants and lengths:

R EXHP 4 - 13 feet
RZ EXHP 14 - 21 feet

Dimensions:

4, 5, 6, 8 inches
4, 5, 6, 8 inches

*All local extractors can be fitted to a wall or ceiling.
For ceiling mounting, a bracket is available.*

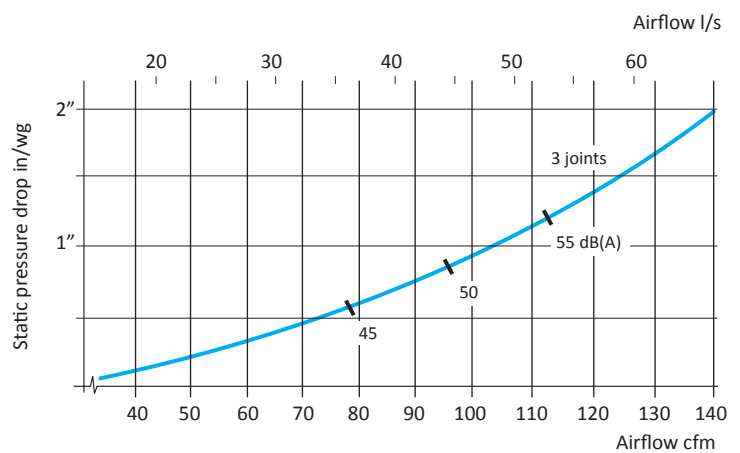
ME - New design for lower pressure drop.



The Movex ME extractor with its uniquely designed joint structure combines maximum flexibility with very low pressure drop. As a result of the air passing through the joints without creating unnecessary turbulence, the variation in air flow between an arm in the extended position and an arm in the folded position is minimal.

All variants of the ME are available in wall, ceiling, or table mounting. As applications vary, a number of different hoods are also available.

Low pressure drop, an important quality aspect.



The Movex ME has a 50% lower pressure drop compared with similar products on the market.



Facts: ME

Variants and lengths:

Standard: 25"-104"

PP: 39"-104"

ESD: 25"-78"

ATEX: 39"-104"

Diameters:

2, 3, 4 inches

3, 4 inches

2, 3 inches

3, 4 inches

TERFU - The classic laboratory arm.



Facts: **Terfu**

Variants and lengths:

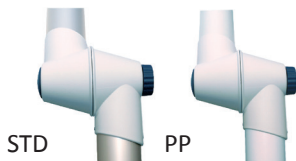
Standard: 39"-78"

PP: 39"-78"

Diameters:

3 inches

3 inches



The Movex predecessor of the ME series is our classic laboratory arm, Terfu.

Characterized by being easy to reposition close to the pollution source "positional stability", the Terfu is supplied assembled for ease of installation. Because all joints contain ball bearings with a large frictional diameter, each is easily adjustable by means of a one-handed knob.

With support springs balancing the weight of the arm, the Terfu incorporates a 360° swivel and 4 inch duct connection.

Delivered with a tight-sealing damper as standard.

As with the ME, all variants are available for wall, ceiling or table mounting. A number of different hoods are also available.



MiniTex - Telescopic extractor with extremely low pressure drop.

The Movex MiniTex with its unique low pressure drop provides an alternative solution where extreme flexibility is not absolutely essential. The arm's compact telescopic design makes the MiniTex the ideal extractor for use in limited spaces. The MiniTex is also an excellent choice for combining with fume cabinets in the same system due to its low pressure drop. Available as both wall and ceiling mounted with a number of hoods as accessories.



Facts: MiniTex

Variants and lengths:
Standard: 44", 60"

Diameters:
3, 4 inches

MEX AA - Telescopic local extractor for atom absorption apparatus and other high heat exhaust applications.



The MEX AA is specially developed for the evacuation of airborne pollutants at high temperatures from open flames as from an atomic absorption apparatus.

Facts: MEX AA

Variants:

MEX AAF with rectangular hood	20 x 10
MEX AAR with round hood	Ø 10

DSK - A fume cabinet with possibilities.

The Movex DSK is a diverse cabinet ideal for open vessels, chemical apparatus and gluing. With its transparent walls and roof, the DSK provides full viewing of the work area. Lighter weight, it can be easily moved between work sites.



Facts: DSK

Variants:

DSK 400

DSK 700

Dimensions:

24x16x16

40x20x28

APS - The optimal solution for moving vehicles.

The Movex APS is the most technologically modern exhaust rail on the market. The rail's unique profile provides several advantages. Coupled with easy assembly, extremely low pressure drop means low running costs. The rail's design includes a flexible rubber flap minimizing the risk of leaks. Bus depots, DOT centers, car and truck service bays are all typical installation sites for the APS.



AFSA/AFSH/AFSU - Exhaust rails for emergency service vehicles.

Movex's modern aluminum rails for emergency service vehicles span the requirements of the market and are suitable for all types of exhaust pipes as found on ambulances, fire response vehicles and larger trucks. The rail can be fitted with various automated solutions including start/stop of fans and automatic nozzle disconnects.



AFS - A modern variant of the hose rail.

The Movex AFS is a contemporary aluminum rail system for moving vehicles. The rail can be fitted with various automated solutions including start/stop of fans and automatic nozzle disconnects. The AFS can be mounted to the ceiling or wall with adjustable brackets and can automate hose return by slanting the rail at 2° from level.



ASA - Modern pivoting arm for larger vehicles.



The Movex ASA is a balance block solution available with or without the pivoting arm and primarily used for large vehicles, trucks and plant machinery with high temperature requirements.

Facts: ASA

Variants and lengths
Blue 13-21 feet
Or with
Wall bracket 31"

Diameters:
4, 5, 6 inches
4, 5, 6 inches

ASE/ASEM - Hose reels for work on stationary vehicles.



The Movex ASE/ASEM is a hose reel with a wide selection of hose lengths and compositions. The ASE/ASEM offers a practical solution for exhaust extraction at vehicle service bays as the entire hose can be rolled up when not in use. Available in two versions as the ASE with mechanical return spring, or the ASEM motorized model - always recommended when using hoses longer than 41 feet.

Facts: **ASE/ASEM**

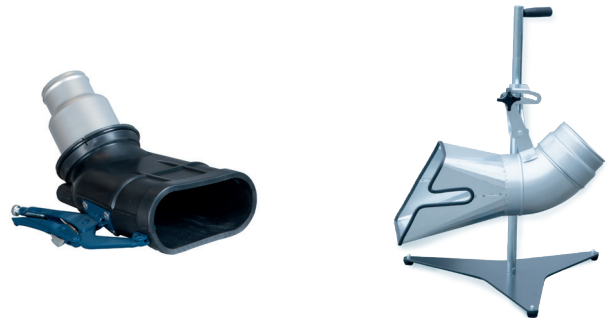
Variants and lengths
Springs 16-41 feet
Or
Motorized 24-49 feet

Diameters:
3, 4, 5, 6 inches
3, 4, 5, 6 inches

Exhaust nozzles for all kinds of vehicles.

Movex's wide range of exhaust nozzles will always give you the opportunity to find something that suits your particular needs.

For cars, the nozzle is made entirely of rubber to avoid damaging the vehicle's exhaust. For use with trucks and plant machinery, nozzles are available made entirely of rubber, but also in combination with steel plate for greater heat resistance. A full range of branch connectors and hose burst safety devices are also available.

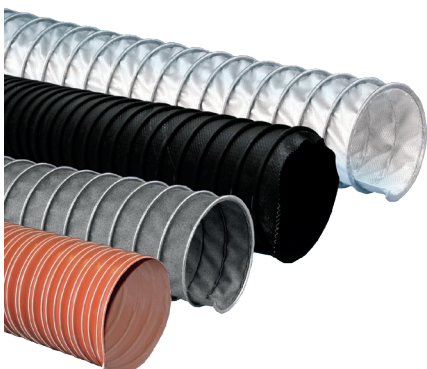


Facts: **Exhaust nozzles**

Variants
Manual disconnection
Automatic disconnection

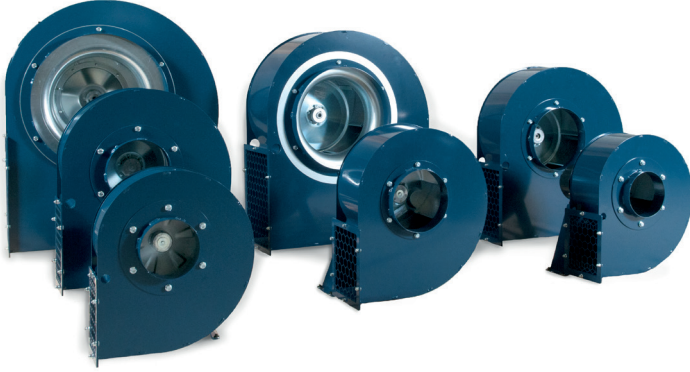
Diameters:
3, 4, 5, 6 inches
3, 4, 5 inches

Low-weight exhaust hoses for various temperature ranges.



Movex's range of exhaust hoses meet or exceed specs for most applications. All hoses are specially designed for low pressure drop with great flexibility exhibiting high strength and a small curve radius. All of the Movex hoses are resistant to all chemicals present in diesel and gas exhaust fumes.

Industrial fans - Developed for use with particle-rich air.



The Movex FB represents a range of radial fans for the extraction of gases, smoke and small particles. For airflows ranging from 200 to 8000 cfm

The impeller with its curved blades is manufactured from welded sheet steel and is electro-galvanized as standard.

The fans are optimized for use together with the Movex product range for local extraction in industrial environments and vehicle workshops.

There are a number of accessories available for the FB range to make installation and use easier and more efficient.

Control units for local extractors and vehicle exhaust systems.

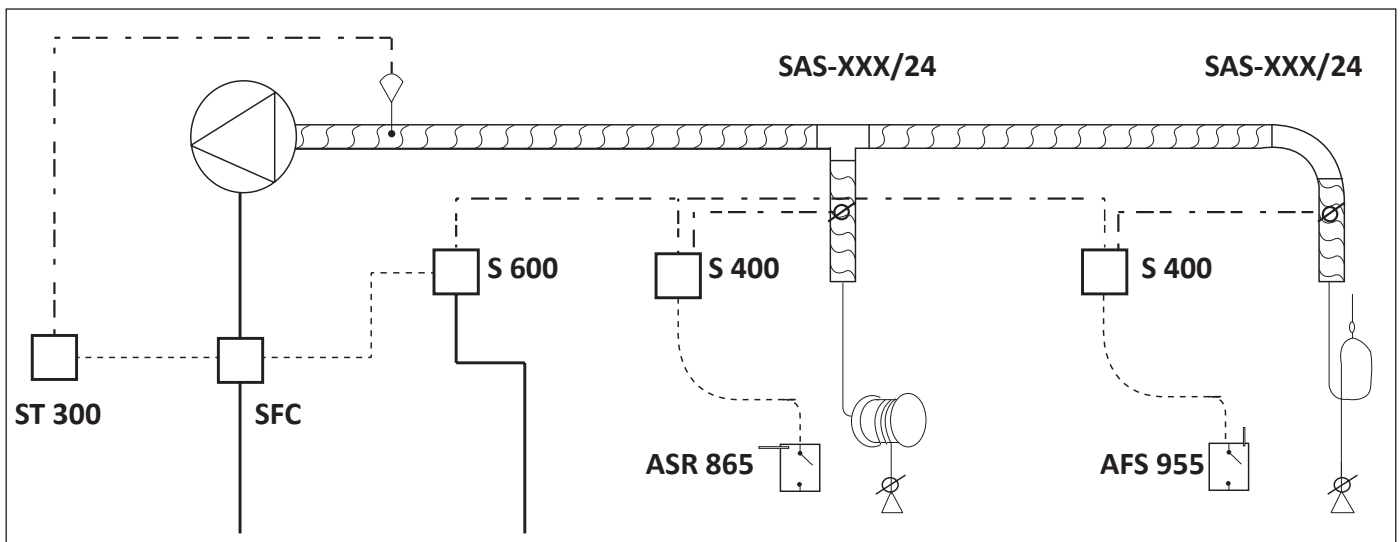
Movex control units provide a safer working environment suitable for all types of exhaust systems. Choosing the right control also means saving on energy costs while reducing noise pollution.

Control units

For more examples of different control solutions, see our website or request a product sheet from Movex.

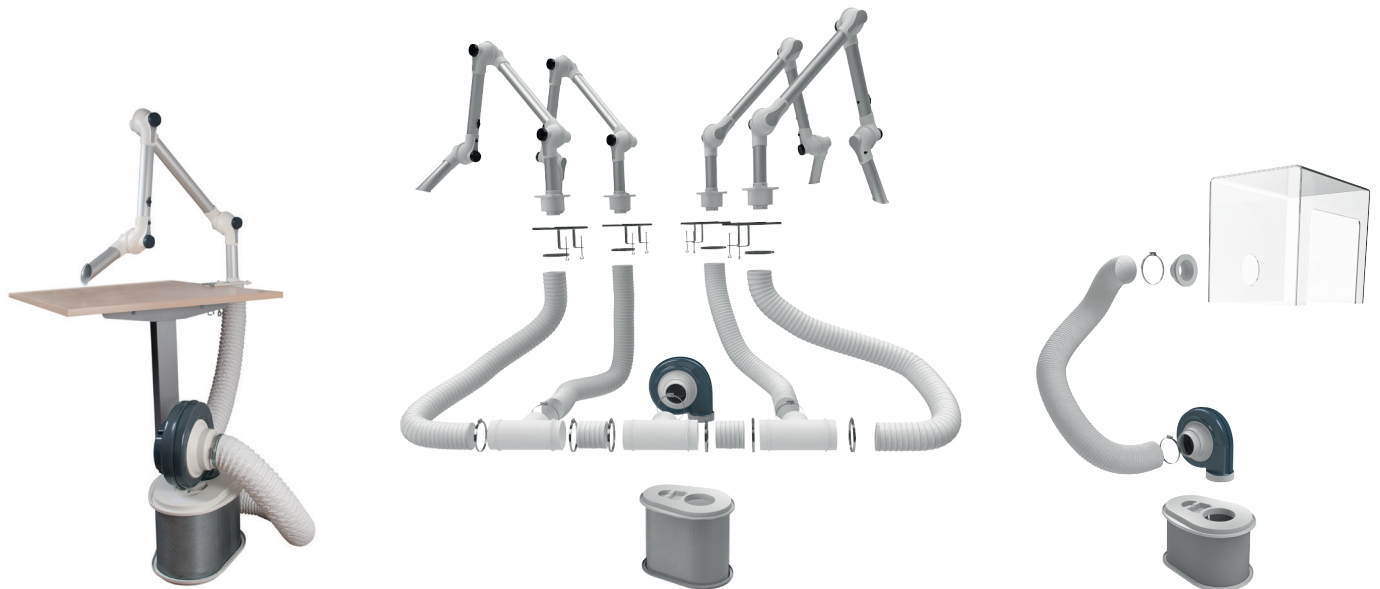


System 4:11, Automatic control of frequency converter and damper, with time delay.



LF 50- Portable filter unit for flexible solutions in temporary work areas.

Suitable for use in work environments requiring the filtration of particles such as solder smoke, the LF-50 can also be fitted with an activated carbon filter to extract odors and chemical fumes. Speed controllable, this portable filter can also be used with precision TIG welding, laser marking, conservation, and at nail care salons.



The diverse LF-100 portable filter system.



MF - Mobile filter for welding smoke and fine dust in temporary work locations.



The MF mobile filter is ideal for weld smoke and fine dust filtration at temporary work sites. With a high cleaning efficiency and great suction capacity, the MF comes fitted with the Movex PR local extractor in a choice of 7 or 10 foot lengths. Easy to move around on four smooth running pivot wheels, the MF is supplied complete and ready for use with a 110V AC cord. A carbon filter for air/gas mixtures is also available.

VF - Wall-mounted filter for welding smoke.

The VF filter for welding smoke and fine dust can also be fitted with the Movex PR local extractor in a choice of 7 or 10 foot lengths. For connection direct to a spirotube or other ducting, the VF is supplied complete and ready for use with a two layer, flame proof cartridge filter.



SF - Portable welding filter for use in temporary worksites requiring high separation efficiency.



Welding smoke contains large quantities of very small and harmful particles for which a very high separation efficiency is required. The Movex SF portable welding filter satisfies this requirement

Available in three sizes, the SF incorporates a three stage filtering process for temporary workplace use.

CFE- dust filter for large airflows.

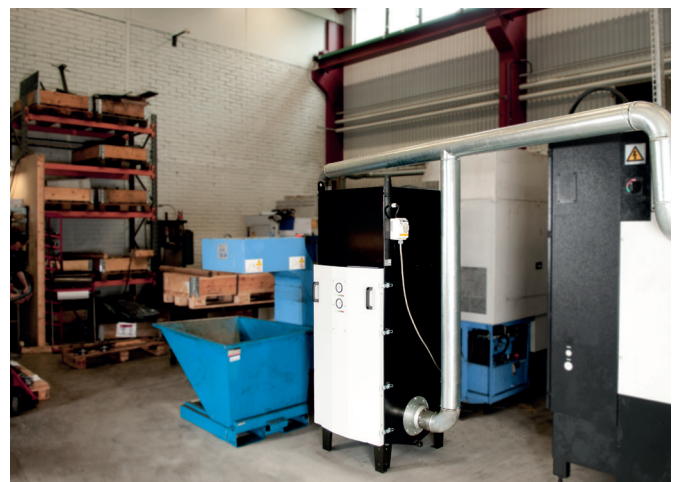
Movex CFE is suitable for filtration of dry particles, dust and welding smoke for mechanical industry.

The filter is manufactured with 2-4-6 and 8 horizontally placed filter cartridges for airflows from 600 -5500 cfm for larger airflows more filters can be placed parallel in the same system.



OF - Modular oil mist filter.

The OF oil mist filter with 2 and 3-stage filtration for filtering oil and emulsion mist during cutting work such as turning, milling, drilling, wet grinding and spark reduction has been developed for airflows of 250 - 5000 cfm. With its modular design, several units can be easily combined to expand the system to meet future needs. The OF is user friendly and requires very low maintenance.



MOVEX[®]

Movex Inc.

104 Commerce Drive

Northampton, PA 18067 USA

Phone: 610 440-0478 Fax: 610 440-0480

www.movexinc.com info@movexinc.com