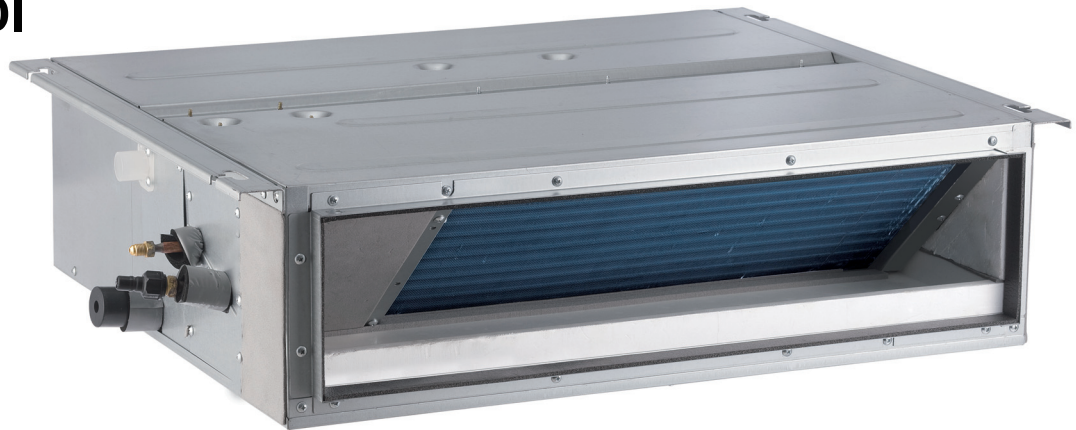




MULTI

12,000 BTUH Multi-zone Ducted

**Model:
KM12HFDI**



Item	Unit	Specification
Model	—	KM12HFDI
System and Electrical Ratings		
Rated Cooling Capacity	Btu/h	11900
Rated Heating Capacity	Btu/h	13100
Sound Pressure (High/Low)	dB(A)	39/32
Air Flow (max)	CFM	294
Ext Static Pressure (max/min)	InWg	0.04/0.03
Normal Operational Voltage	—	208-230 V, 1 Ph, 60 Hz
Voltage Range	V	187-253
MCA/ Power Cable Size	A	1
Unit and Pipe Data		
Communication Cable Wire Size	AWG	14-4
Unit Dimensions (L×H×D)	mm	700 x 615 x 200
	Inch	27.6 x 24.2 x 7.9
Weight (Net/Shipping)	lbs	51/64
Condensate Drain Lift (Height)	mm	457
	Inch	18
Drain Size (OD)	mm	26
	Inch	1
Refrigerant Type	—	R410A
Gas Pipe Size (OD)	Inch	3/8
Liquid Pipe Size (OD)	Inch	1/4
Connection Method	—	Flared

Job Name:

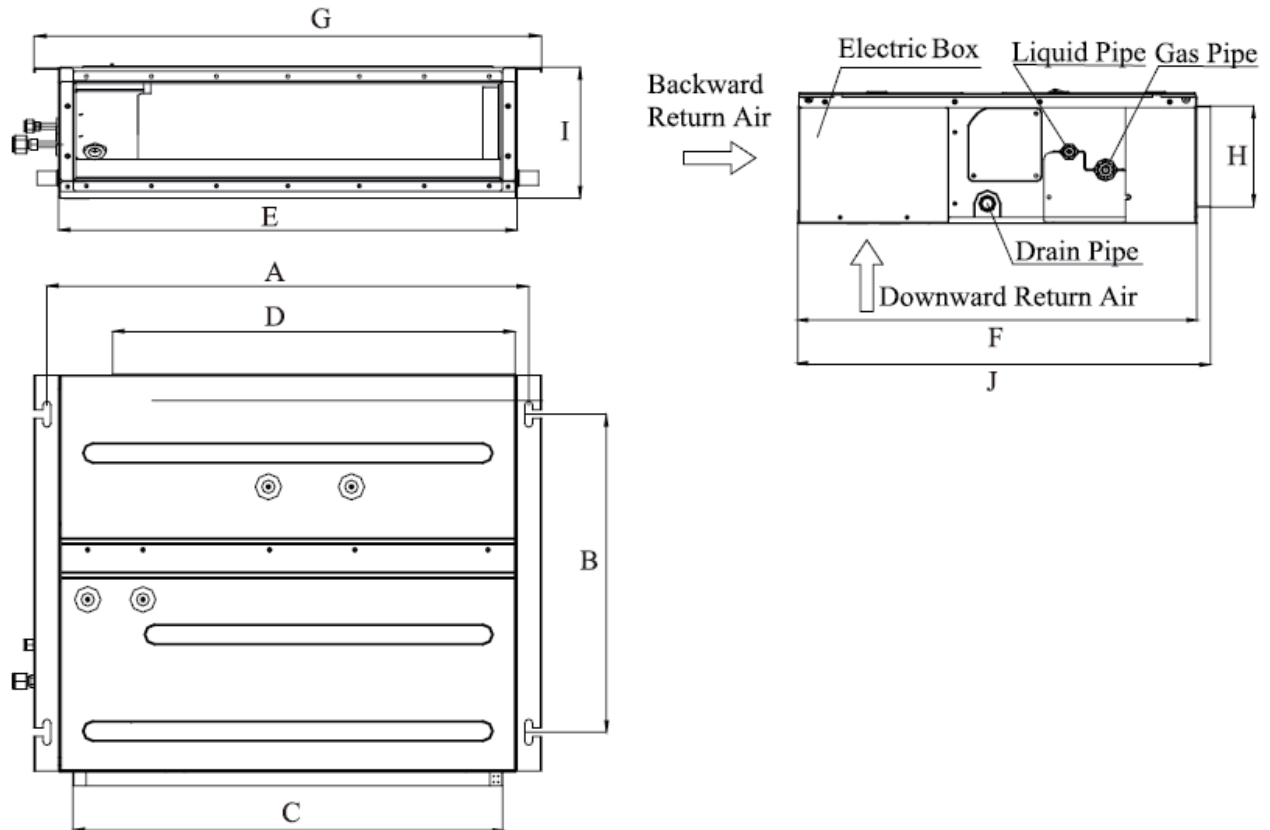
Schedule Reference:

Date:

Specification are subject to change without notice.



Outline and Physical Dimensions of KM12HFDI.



Model	A	B	C	D	E	F	G	H	I	J
KM12HFDI	742	491	662	620	700	615	782	156	200	635