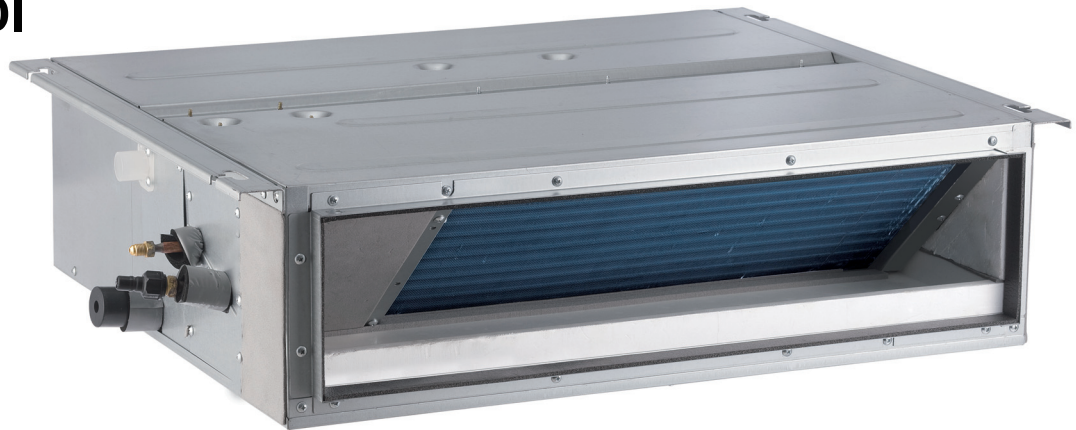


MULTI

24,000 BTUH Multi-zone Ducted

**Model:
KM24HFDI**



Item	Unit	Specification
Model	—	KM24HFDI
System and Electrical Ratings		
Rated Cooling Capacity	Btu/h	23800
Rated Heating Capacity	Btu/h	27400
Sound Pressure (High/Low)	dB(A)	42/34
Air Flow (max)	CFM	589
Ext Static Pressure (max/min)	InWg	0.040/0.035
Normal Operational Voltage	—	208-230 V, 1 Ph, 60 Hz
Voltage Range	V	187-253
MCA/ Power Cable Size	A	1
Unit and Pipe Data		
Communication Cable Wire Size	AWG	14-4
Unit Dimensions (L×H×D)	mm	1100 x 615 x 200
	Inch	43.3 x 24.2 x 7.9
Weight (Net/Shipping)	lbs	68/90
Condensate Drain Lift (Height)	mm	457
	Inch	18
Drain Size (OD)	mm	26
	Inch	1
Refrigerant Type	—	R410A
Gas Pipe Size (OD)	Inch	5/8
Liquid Pipe Size (OD)	Inch	3/8
		Flared

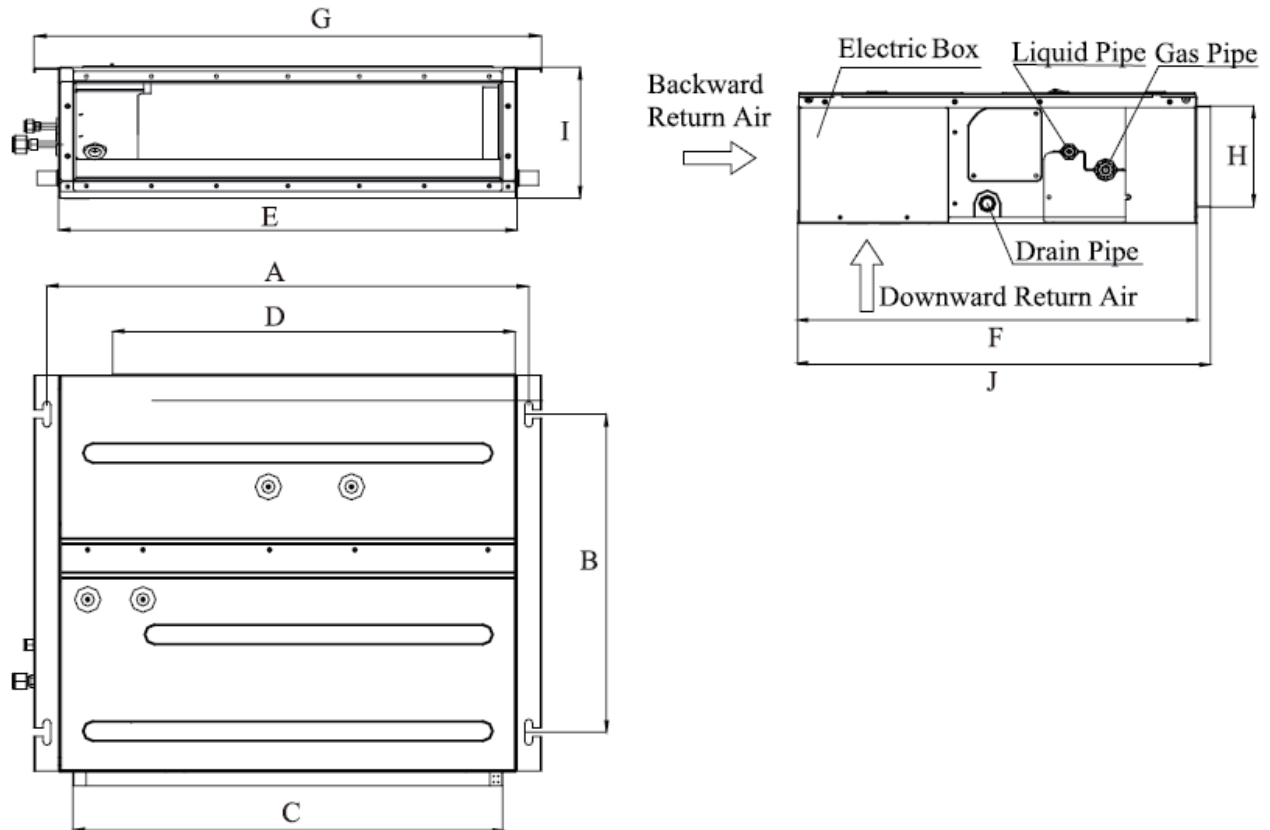
Job Name:

Schedule Reference:

Date:



Outline and Physical Dimensions of KM24HFDI.



Model	A	B	C	D	E	F	G	H	I	J
KM24HFDI	1142	491	1062	1020	1100	615	1182	156	200	635